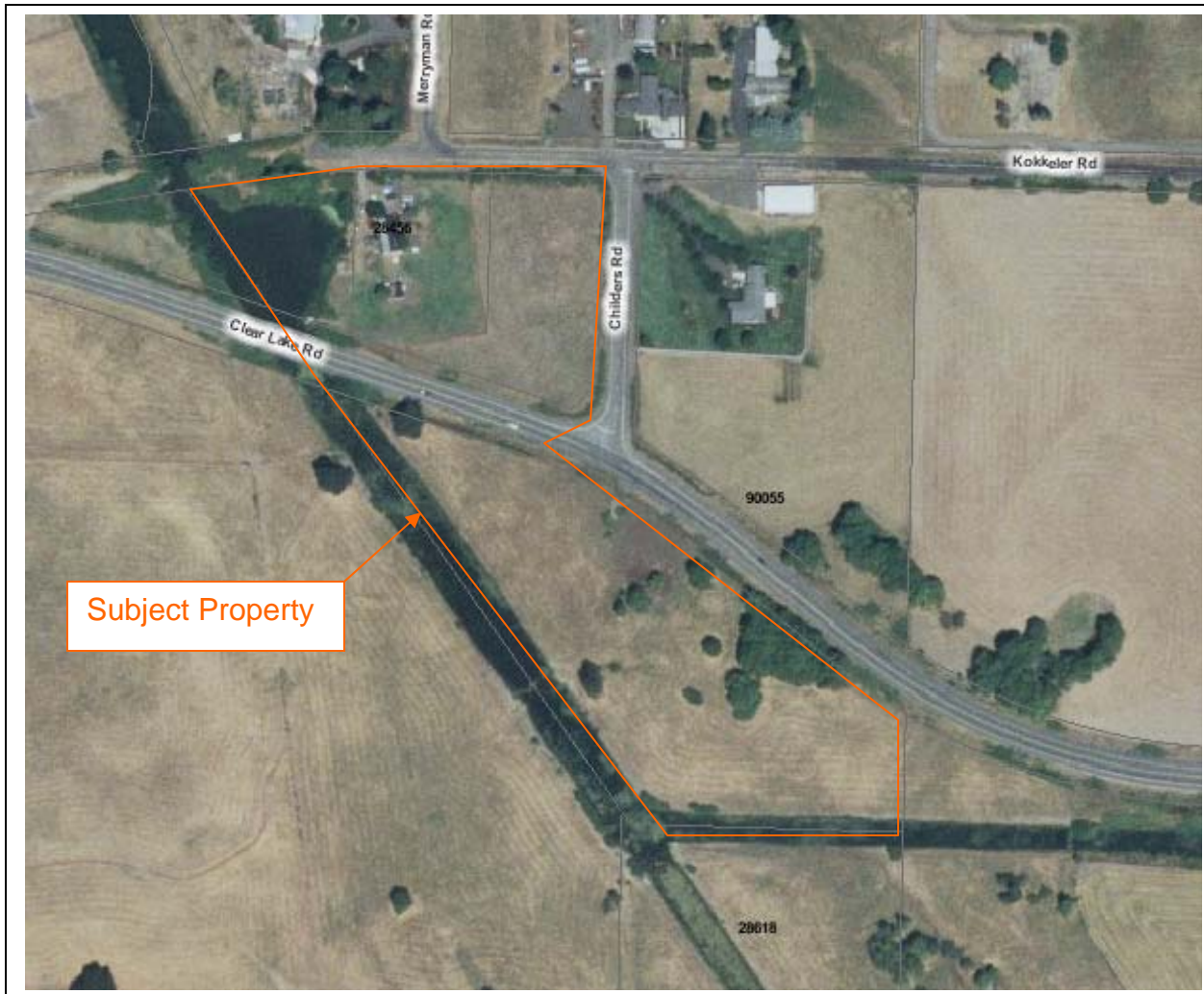




Lane County Road Fund Surplus Property Available for Purchase 28456 Kokkeler Road, Eugene



- Lane County Assessor's Tax Lots 2000 and 2100 on Map 17-04-07, Approximately 9.7 acres per Lane County Assessor's records
- Includes older mobile home of no value
- Good well and older septic system
- Frontage along Junction City Water Control District's "A-2" channel along west and south sides
- Broker participation invited, 5% commission paid subject to final approval of the sale by Lane County Board of Commissioners
- Zoned E-40, Exclusive Farm Use

Above information from sources deemed to be reliable, but is not guaranteed

For Further information contact Karl Oakes, Real Property Officer, at (541) 682-6985, or by e-mail at Karl.oakes@co.lane.or.us

All Sales Subject to Final Approval by Lane County Board of Commissioners

**Engineering and Construction Services Division
Right of Way Management Section**

3040 North Delta Highway • Eugene OR 97408-1696 • (541) 682-6981 • FAX: (541) 682-8557 • www.lanecounty.org/pw