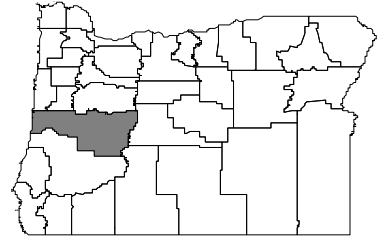


Lane County Tobacco Fact Sheet 2011

Tobacco's Toll on Lane County in One Year



County Population:
73,278 youths
274,412 adults
347,690 total

- 50,492 adults** regularly smoke cigarettes.
- 13,550 people** suffer from a serious illness caused by tobacco use.
- 693 people** die from tobacco use (23 percent of all deaths in this county).
- \$127 million** is spent on medical care for tobacco-related illnesses.
- \$116 million** in productivity is lost due to tobacco-related deaths.

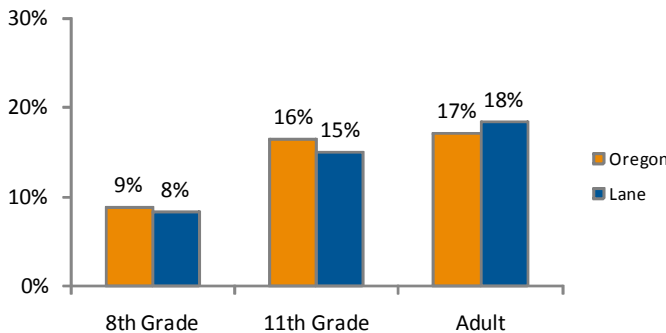
Tobacco Control Highlights

- 91 percent of adults report no-smoking rules in their home.
- 90 percent of eighth-grade students report that they live in a smoke-free home.
- 47 percent of smokers made an attempt to quit last year.

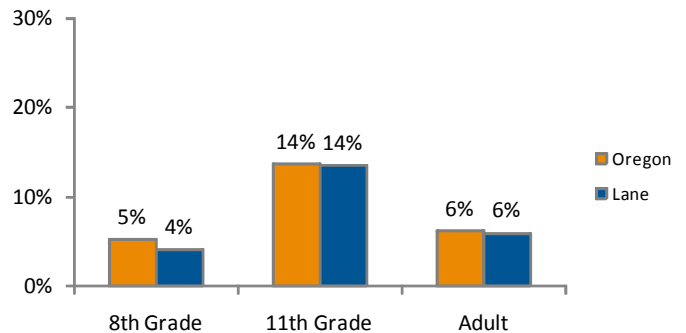
Tobacco Use Among Adults and Youth

Statewide, smoking among adults has decreased 26 percent since 1996. Smoking has declined 54 percent among Oregon's eighth-graders, and 46 percent among 11th-graders. Use of smokeless tobacco has dropped as well.

Cigarette Smoking



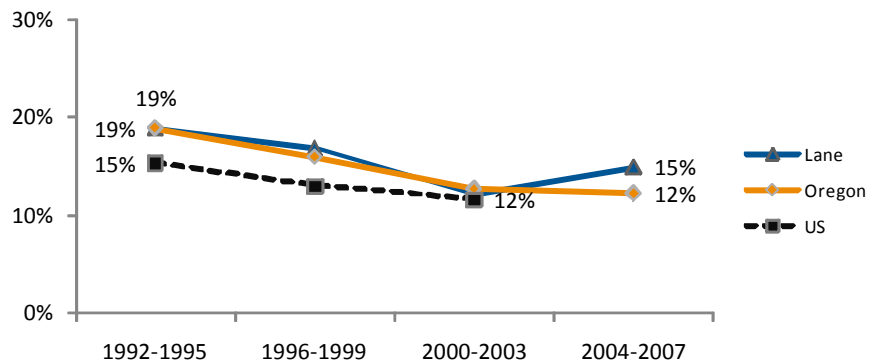
Smokeless Tobacco Use by Males



Tobacco Use During Pregnancy

Since 1996, the percentage of infants born to mothers in Oregon who used tobacco while pregnant has decreased 34 percent.

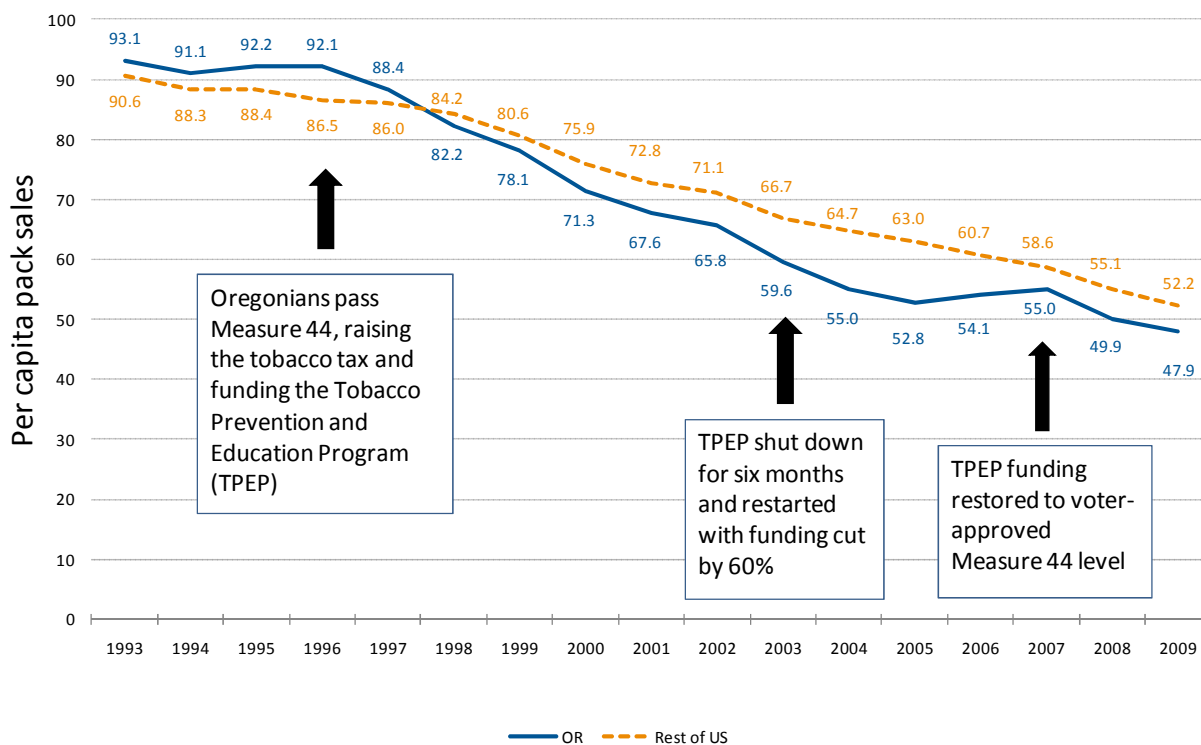
Prenatal Tobacco Use



Cigarette Consumption in Oregon

Oregon's per-capita cigarette consumption decreased 48% from 1996 to 2009.

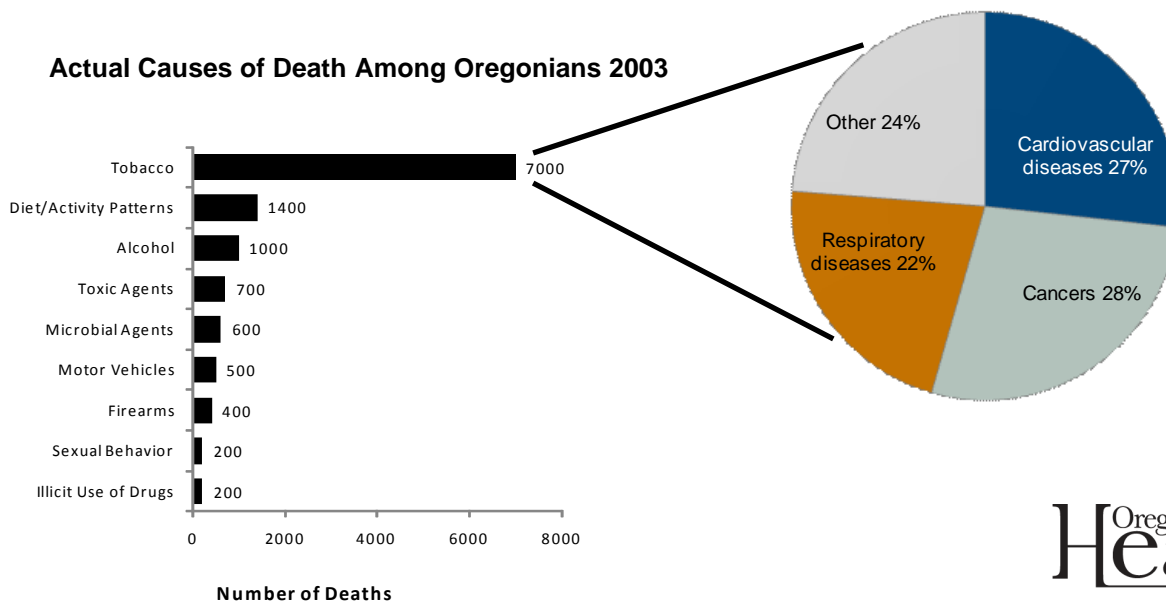
Per-capita Cigarette Pack Sales (Oregon vs. U.S.), 1993 through 2009



Deaths in Oregon

Over 22 percent of the deaths in Oregon are linked to tobacco.

Actual Causes of Death Among Oregonians 2003



TECHNICAL NOTES AND DOCUMENTATION AVAILABLE AT: www.healthoregon.org/tobacco

Suggested Citation

Tobacco Prevention and Education Program. *Lane County Tobacco Fact Sheet 2011*. Portland, Oregon: Oregon Health Authority, Oregon Public Health Division, 2010.



PUBLIC HEALTH DIVISION
Tobacco Prevention and Education Program

800 NE Oregon St., Suite 730
Portland, OR 97232

971-673-0984

www.healthoregon.org/tobacco