



# Lane County Sheriff's Office

**BUDGET PRESENTATION**

**MAY 4, 2010**



*Welcome to  
Lane County*

**Where Measure 11  
Offenders no longer  
get out of Jail free.**



# Since the Addition of 84 Beds

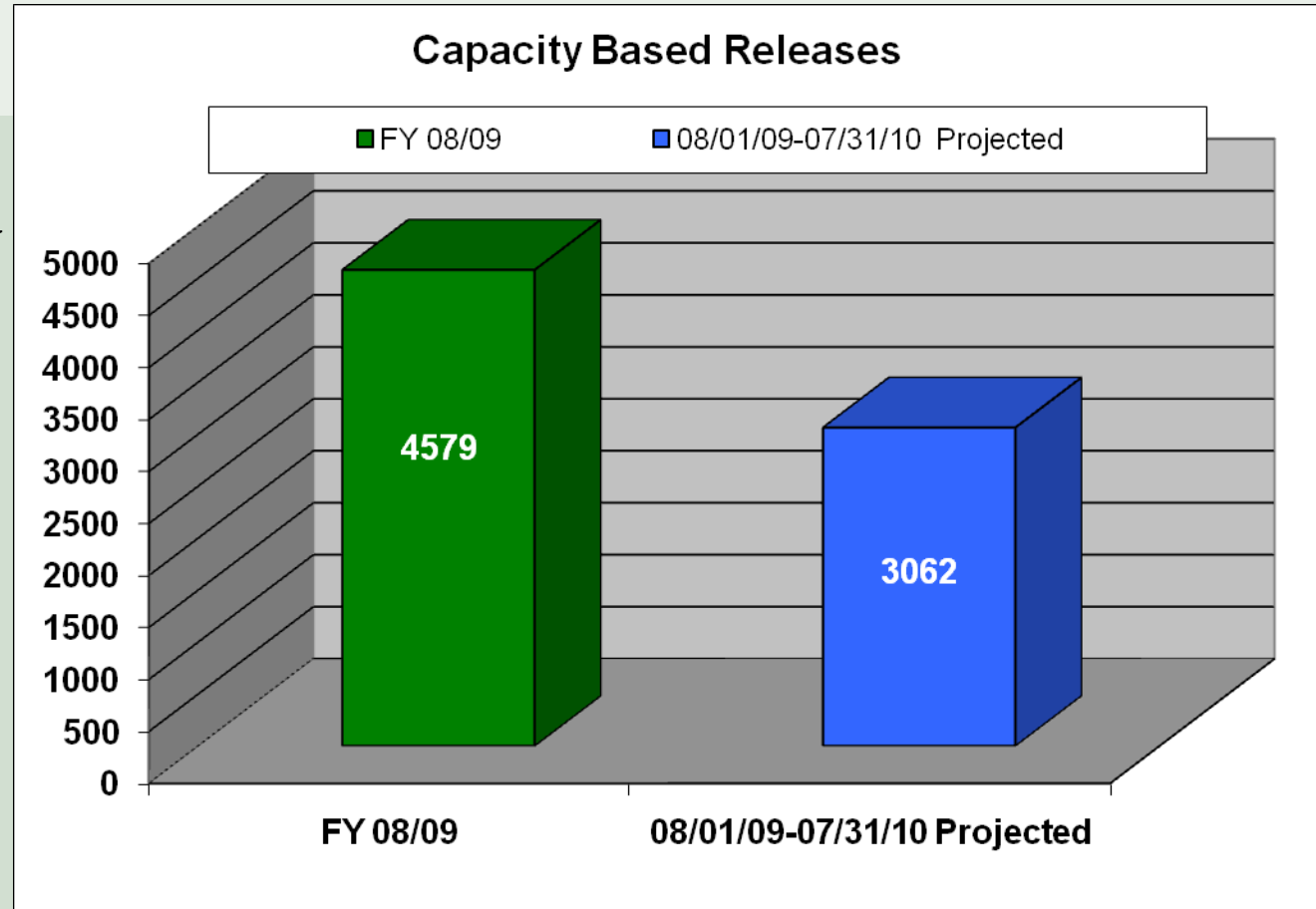


- Capacity Based Releases (CBR) reduced by 33%
- No pre-trial Measure 11 inmates have been CBRd
- No pre-trial statutory defined violent felony inmate CBRs
- High risk for danger per Risk Assessment Tool CBRs reduced by an estimated 90%
- Number of sentenced offenders being CBRd has decreased by 24% since the 84 bed addition
- Failure to Appear rate improving

# Capacity Based Releases Since the Addition of 84 Beds



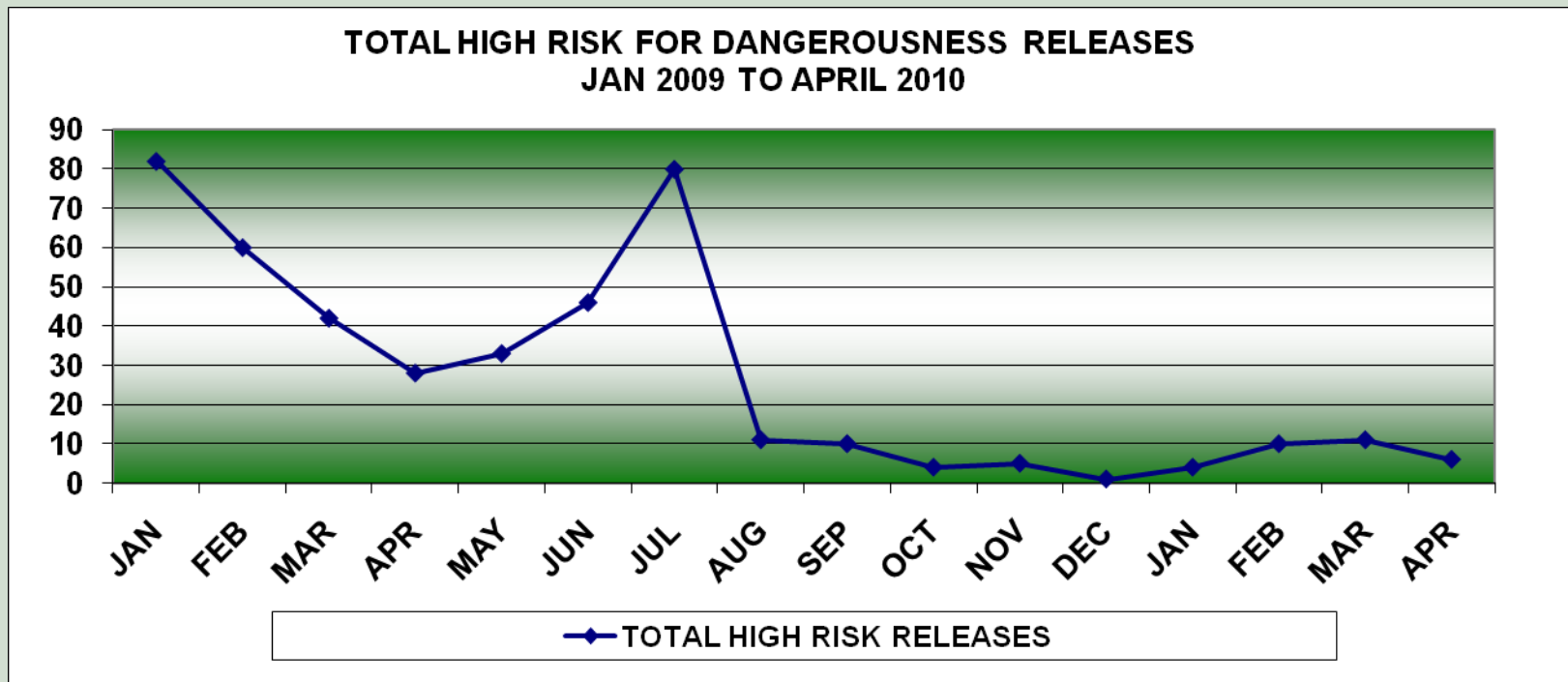
- CBRs will be down to approximately 3,062 in first 12 months (33% reduction)
- CBRs per day: 8.39 down from 12.54



# Dangerous High Risk Inmates CBRd



- FY 08/09: Approximately 700 high risk for danger per Risk Assessment Tool (RAT) were CBRd
- Number of high risk for danger per RAT projected to be CBRd in the first year since opening 84 beds is 74 (89.4% decrease)



# Who would be CBRd without the 84 beds?



## Inmate #1

- Arrested on multiple felony charges including Assault 1 related to alleged abuse on his two month old daughter who was hospitalized with multiple broken bones
- He is high in all risk categories (dangerousness, failing to appear, and recidivism)

**Inmate #1 is still in custody pending trial**

# Who would be CBRd without the 84 beds?



## Inmate #2

- Arrested for Arson 1 and several other lesser offenses
- He was high in all risk categories (dangerousness, failing to appear, and recidivism)

**Inmate #2 was held until sentenced and sent to the Oregon State Prison**

# Who would be CBRd without the 84 beds?



## Inmate #3

- Arrested on multiple domestic violence felonies, the most serious being an Assault 2
- Allegedly beat his female domestic partner with a frying pan and hospitalized her
- He is high in the danger risk category

**Inmate #3 is still in custody pending trial**

# Who would be CBRd without the 84 beds?



## Inmate #4

- She was arrested on two counts of Assault 1
- While her male domestic partner was sleeping, she allegedly attacked him with a knife. The victim was hospitalized with multiple stab wounds to his chest and arms
- She is high in the danger risk category

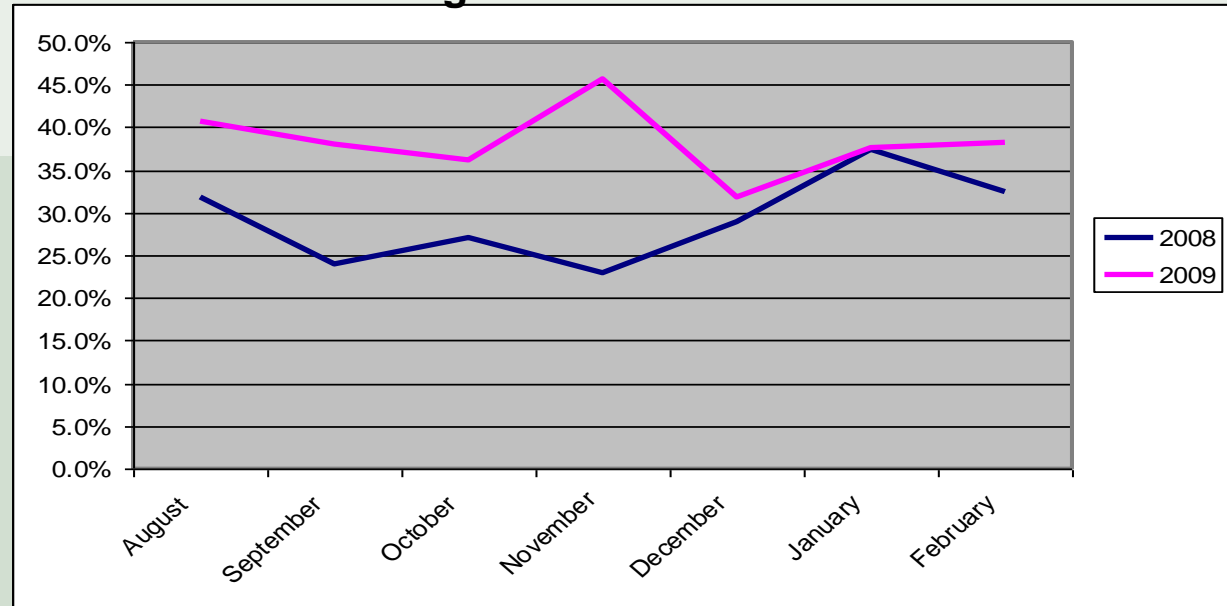
**Inmate #4 is still in custody pending trial**

# Percentage of Sentences Served



- Number of sentenced offenders being CBRd has decreased by 24%, since the 84 bed addition

Percentage of Sentence Served



- FY 08/09: Sentenced offenders that were CBRd served 29.2% of their sentence
- Since the 84 bed addition, that percentage has increased to 38.2%

# Impact on Failure to Appear



## 2008

| JANUARY |    |    |    |    |    |    |
|---------|----|----|----|----|----|----|
| S       | M  | T  | W  | T  | F  | S  |
|         |    | 1  | 2  | 3  | 4  | 5  |
| 6       | 7  | 8  | 9  | 10 | 11 | 12 |
| 13      | 14 | 15 | 16 | 17 | 18 | 19 |
| 20      | 21 | 22 | 23 | 24 | 25 | 26 |
| 27      | 28 | 29 | 30 | 31 |    |    |

| JULY |    |    |    |    |    |    |
|------|----|----|----|----|----|----|
| S    | M  | T  | W  | T  | F  | S  |
|      |    | 1  | 2  | 3  | 4  | 5  |
| 6    | 7  | 8  | 9  | 10 | 11 | 12 |
| 13   | 14 | 15 | 16 | 17 | 18 | 19 |
| 20   | 21 | 22 | 23 | 24 | 25 | 26 |
| 27   | 28 | 29 | 30 | 31 |    |    |

| FEBRUARY |    |    |    |    |    |    |
|----------|----|----|----|----|----|----|
| S        | M  | T  | W  | T  | F  | S  |
|          |    |    |    |    | 1  | 2  |
| 3        | 4  | 5  | 6  | 7  | 8  | 9  |
| 10       | 11 | 12 | 13 | 14 | 15 | 16 |
| 17       | 18 | 19 | 20 | 21 | 22 | 23 |
| 24       | 25 | 26 | 27 | 28 | 29 |    |

| AUGUST |    |    |    |    |    |    |
|--------|----|----|----|----|----|----|
| S      | M  | T  | W  | T  | F  | S  |
|        |    |    |    |    | 1  | 2  |
| 3      | 4  | 5  | 6  | 7  | 8  | 9  |
| 10     | 11 | 12 | 13 | 14 | 15 | 16 |
| 17     | 18 | 19 | 20 | 21 | 22 | 23 |
| 24     | 25 | 26 | 27 | 28 | 29 | 30 |
| 31     |    |    |    |    |    |    |

| MARCH |    |    |    |    |    |    |
|-------|----|----|----|----|----|----|
| S     | M  | T  | W  | T  | F  | S  |
|       |    |    |    |    |    | 1  |
| 2     | 3  | 4  | 5  | 6  | 7  | 8  |
| 9     | 10 | 11 | 12 | 13 | 14 | 15 |
| 16    | 17 | 18 | 19 | 20 | 21 | 22 |
| 23    | 24 | 25 | 26 | 27 | 28 | 29 |
| 30    | 31 |    |    |    |    |    |

| SEPTEMBER |    |    |    |    |    |    |
|-----------|----|----|----|----|----|----|
| S         | M  | T  | W  | T  | F  | S  |
|           |    | 1  | 2  | 3  | 4  | 5  |
| 6         | 7  | 8  | 9  | 10 | 11 | 12 |
| 13        | 14 | 15 | 16 | 17 | 18 | 19 |
| 20        | 21 | 22 | 23 | 24 | 25 | 26 |
| 27        | 28 | 29 | 30 |    |    |    |

| APRIL |    |    |    |    |    |    |
|-------|----|----|----|----|----|----|
| S     | M  | T  | W  | T  | F  | S  |
|       |    | 1  | 2  | 3  | 4  | 5  |
| 6     | 7  | 8  | 9  | 10 | 11 | 12 |
| 13    | 14 | 15 | 16 | 17 | 18 | 19 |
| 20    | 21 | 22 | 23 | 24 | 25 | 26 |
| 27    | 28 | 29 | 30 |    |    |    |

| OCTOBER |    |    |    |    |    |    |
|---------|----|----|----|----|----|----|
| S       | M  | T  | W  | T  | F  | S  |
|         |    |    | 1  | 2  | 3  | 4  |
| 5       | 6  | 7  | 8  | 9  | 10 | 11 |
| 12      | 13 | 14 | 15 | 16 | 17 | 18 |
| 19      | 20 | 21 | 22 | 23 | 24 | 25 |
| 26      | 27 | 28 | 29 | 30 | 31 |    |

| MAY |    |    |    |    |    |    |
|-----|----|----|----|----|----|----|
| S   | M  | T  | W  | T  | F  | S  |
|     |    |    |    |    | 1  | 2  |
| 3   | 4  | 5  | 6  | 7  | 8  | 9  |
| 10  | 11 | 12 | 13 | 14 | 15 | 16 |
| 17  | 18 | 19 | 20 | 21 | 22 | 23 |
| 24  | 25 | 26 | 27 | 28 | 29 | 30 |
| 31  |    |    |    |    |    |    |

| NOVEMBER |    |    |    |    |    |    |
|----------|----|----|----|----|----|----|
| S        | M  | T  | W  | T  | F  | S  |
|          |    |    |    |    |    | 1  |
| 2        | 3  | 4  | 5  | 6  | 7  | 8  |
| 9        | 10 | 11 | 12 | 13 | 14 | 15 |
| 16       | 17 | 18 | 19 | 20 | 21 | 22 |
| 23       | 24 | 25 | 26 | 27 | 28 | 29 |
| 30       |    |    |    |    |    |    |

| JUNE |    |    |    |    |    |    |
|------|----|----|----|----|----|----|
| S    | M  | T  | W  | T  | F  | S  |
| 1    | 2  | 3  | 4  | 5  | 6  | 7  |
| 8    | 9  | 10 | 11 | 12 | 13 | 14 |
| 15   | 16 | 17 | 18 | 19 | 20 | 21 |
| 22   | 23 | 24 | 25 | 26 | 27 | 28 |
| 29   | 30 |    |    |    |    |    |

| DECEMBER |    |    |    |    |    |    |
|----------|----|----|----|----|----|----|
| S        | M  | T  | W  | T  | F  | S  |
|          |    | 1  | 2  | 3  | 4  | 5  |
| 6        | 7  | 8  | 9  | 10 | 11 | 12 |
| 13       | 14 | 15 | 16 | 17 | 18 | 19 |
| 20       | 21 | 22 | 23 | 24 | 25 | 26 |
| 27       | 28 | 29 | 30 | 31 |    |    |

- May 28 - June 7  
Lodged on contempt VRO & warrant for disorderly conduct.  
**CBR Score 123 - High Danger**
- June 19 - 20  
Numerous EGM Warrants  
**CBR Score 70**
- July 16 - 17  
Numerous EGM Warrants Released on Judge's Order
- August 1  
Lodged on PC charge of Assault 3  
**CBR Score 128 - High Danger**
- August 26 - September 1  
Lodged on warrant for Assault 3  
Released by Pre-trial  
**CBR Score 114**
- September 26 - 27  
Lodged on warrant for UUV and PC charge of False Information  
**CBR Score 49**
- October 8 - November 18  
Lodged on numerous warrants and given 90-day sentence. CBRd  
**CBR Score 179 - High Danger**

| JANUARY |    |    |    |    |    |    |
|---------|----|----|----|----|----|----|
| S       | M  | T  | W  | T  | F  | S  |
|         |    |    |    | 1  | 2  | 3  |
| 4       | 5  | 6  | 7  | 8  | 9  | 10 |
| 11      | 12 | 13 | 14 | 15 | 16 | 17 |
| 18      | 19 | 20 | 21 | 22 | 23 | 24 |
| 25      | 26 | 27 | 28 | 29 | 30 | 31 |

| FEBRUARY |    |    |    |    |    |    |
|----------|----|----|----|----|----|----|
| S        | M  | T  | W  | T  | F  | S  |
|          |    |    |    |    | 1  | 2  |
| 3        | 4  | 5  | 6  | 7  | 8  | 9  |
| 10       | 11 | 12 | 13 | 14 | 15 | 16 |
| 17       | 18 | 19 | 20 | 21 | 22 | 23 |
| 24       | 25 | 26 | 27 | 28 | 29 |    |

| MARCH |    |    |    |    |    |    |
|-------|----|----|----|----|----|----|
| S     | M  | T  | W  | T  | F  | S  |
|       |    |    |    |    |    | 1  |
| 2     | 3  | 4  | 5  | 6  | 7  | 8  |
| 9     | 10 | 11 | 12 | 13 | 14 | 15 |
| 16    | 17 | 18 | 19 | 20 | 21 | 22 |
| 23    | 24 | 25 | 26 | 27 | 28 | 29 |
| 30    | 31 |    |    |    |    |    |

| APRIL |    |    |    |    |    |    |
|-------|----|----|----|----|----|----|
| S     | M  | T  | W  | T  | F  | S  |
|       |    |    | 1  | 2  | 3  | 4  |
| 5     | 6  | 7  | 8  | 9  | 10 | 11 |
| 12    | 13 | 14 | 15 | 16 | 17 | 18 |
| 19    | 20 | 21 | 22 | 23 | 24 | 25 |
| 26    | 27 | 28 | 29 | 30 |    |    |

| MAY |    |    |    |    |    |    |
|-----|----|----|----|----|----|----|
| S   | M  | T  | W  | T  | F  | S  |
|     |    |    |    |    |    | 1  |
| 2   | 3  | 4  | 5  | 6  | 7  | 8  |
| 9   | 10 | 11 | 12 | 13 | 14 | 15 |
| 16  | 17 | 18 | 19 | 20 | 21 | 22 |
| 23  | 24 | 25 | 26 | 27 | 28 | 29 |
| 30  | 31 |    |    |    |    |    |

| JUNE |    |    |    |    |    |    |
|------|----|----|----|----|----|----|
| S    | M  | T  | W  | T  | F  | S  |
|      |    | 1  | 2  | 3  | 4  | 5  |
| 6    | 7  | 8  | 9  | 10 | 11 | 12 |
| 13   | 14 | 15 | 16 | 17 | 18 | 19 |
| 20   | 21 | 22 | 23 | 24 | 25 | 26 |
| 27   | 28 | 29 | 30 |    |    |    |

## 2009

| JANUARY |    |    |    |    |    |    |
|---------|----|----|----|----|----|----|
| S       | M  | T  | W  | T  | F  | S  |
|         |    |    |    |    |    | 1  |
| 2       | 3  | 4  | 5  | 6  | 7  | 8  |
| 9       | 10 | 11 | 12 | 13 | 14 | 15 |
| 16      | 17 | 18 | 19 | 20 | 21 | 22 |
| 23      | 24 | 25 | 26 | 27 | 28 | 29 |
| 30      | 31 |    |    |    |    |    |

| FEBRUARY |    |    |    |    |    |    |
|----------|----|----|----|----|----|----|
| S        | M  | T  | W  | T  | F  | S  |
|          |    |    |    |    |    | 1  |
| 2        | 3  | 4  | 5  | 6  | 7  | 8  |
| 9        | 10 | 11 | 12 | 13 | 14 | 15 |
| 16       | 17 | 18 | 19 | 20 | 21 | 22 |
| 23       | 24 | 25 | 26 | 27 | 28 | 29 |
| 30       | 31 |    |    |    |    |    |

| MARCH |    |    |    |    |    |    |
|-------|----|----|----|----|----|----|
| S     | M  | T  | W  | T  | F  | S  |
|       |    |    |    |    |    | 1  |
| 2     | 3  | 4  | 5  | 6  | 7  | 8  |
| 9     | 10 | 11 | 12 | 13 | 14 | 15 |
| 16    | 17 | 18 | 19 | 20 | 21 | 22 |
| 23    | 24 | 25 | 26 | 27 | 28 | 29 |
| 30    | 31 |    |    |    |    |    |

| APRIL |    |    |    |    |    |    |
|-------|----|----|----|----|----|----|
| S     | M  | T  | W  | T  | F  | S  |
|       |    |    |    |    |    | 1  |
| 2     | 3  | 4  | 5  | 6  | 7  | 8  |
| 9     | 10 | 11 | 12 | 13 | 14 | 15 |
| 16    | 17 | 18 | 19 | 20 | 21 | 22 |
| 23    | 24 | 25 | 26 | 27 | 28 | 29 |
| 30    | 31 |    |    |    |    |    |

| MAY |    |    |    |    |    |    |
|-----|----|----|----|----|----|----|
| S   | M  | T  | W  | T  | F  | S  |
|     |    |    |    |    |    | 1  |
| 2   | 3  | 4  | 5  | 6  | 7  | 8  |
| 9   | 10 | 11 | 12 | 13 | 14 | 15 |
| 16  | 17 | 18 | 19 | 20 | 21 | 22 |
| 23  | 24 | 25 | 26 | 27 | 28 | 29 |
| 30  | 31 |    |    |    |    |    |

| JUNE |    |    |    |    |    |    |
|------|----|----|----|----|----|----|
| S    | M  | T  | W  | T  | F  | S  |
|      |    |    |    |    |    | 1  |
| 2    | 3  | 4  | 5  | 6  | 7  | 8  |
| 9    | 10 | 11 | 12 | 13 | 14 | 15 |
| 16   | 17 | 18 | 19 | 20 | 21 | 22 |
| 23   | 24 | 25 | 26 | 27 | 28 | 29 |
| 30   | 31 |    |    |    |    |    |

- May 16  
Lodged on Assault 3 warrant and EGM PC charge.  
**CBR Score 92**
- July 28  
Numerous PC charges including UUV and Escape 3, and warrants  
**CBR Score 152 - High Danger**
- September 12 - October 30  
Numerous warrants; sentenced for 60 days  
**Served Sentence CBR Score 117**

# Field Services



## Resident Deputies

- 2009
  - September 19 - 3 resident deputies restored to communities of
    - ✦ South Lane
    - ✦ West Lane
    - ✦ McKenzie/Mohawk
  - Responded to 557 calls for service
  - Resident deputies have reconnected with our rural communities through Neighborhood Watch, local schools and business/property owners
  - The Sheriff's Office has received positive response from area residents about putting a law enforcement presence back into our rural communities



# Special Operations



## Forest Team

- 2009
  - 100% funded by SRS (Title III) monies
  - Visible uniform patrols in Federal wild lands
  - 20 Felony arrests
  - 38 Misdemeanor arrests
  - 305 Citations
  - 239 calls for service
  - 45 drug investigations
  - Support to SAR missions and other safety threats



# Office of the Sheriff



## Training

- July 2009 to-date
  - 389 officers trained
  - 280 classes
  - 10, 300 hours
  - 141 topics included:
    - ✦ Communications
    - ✦ Basic Life Support
    - ✦ Leadership
    - ✦ Use of Force
      - Firearms
      - Defensive Tactics
      - Cell Extraction
    - ✦ General Skills
      - DPSST Academy
      - Patrol / Corrections / Investigations
      - Diversity / Legal Updates / Computer



# East Annex



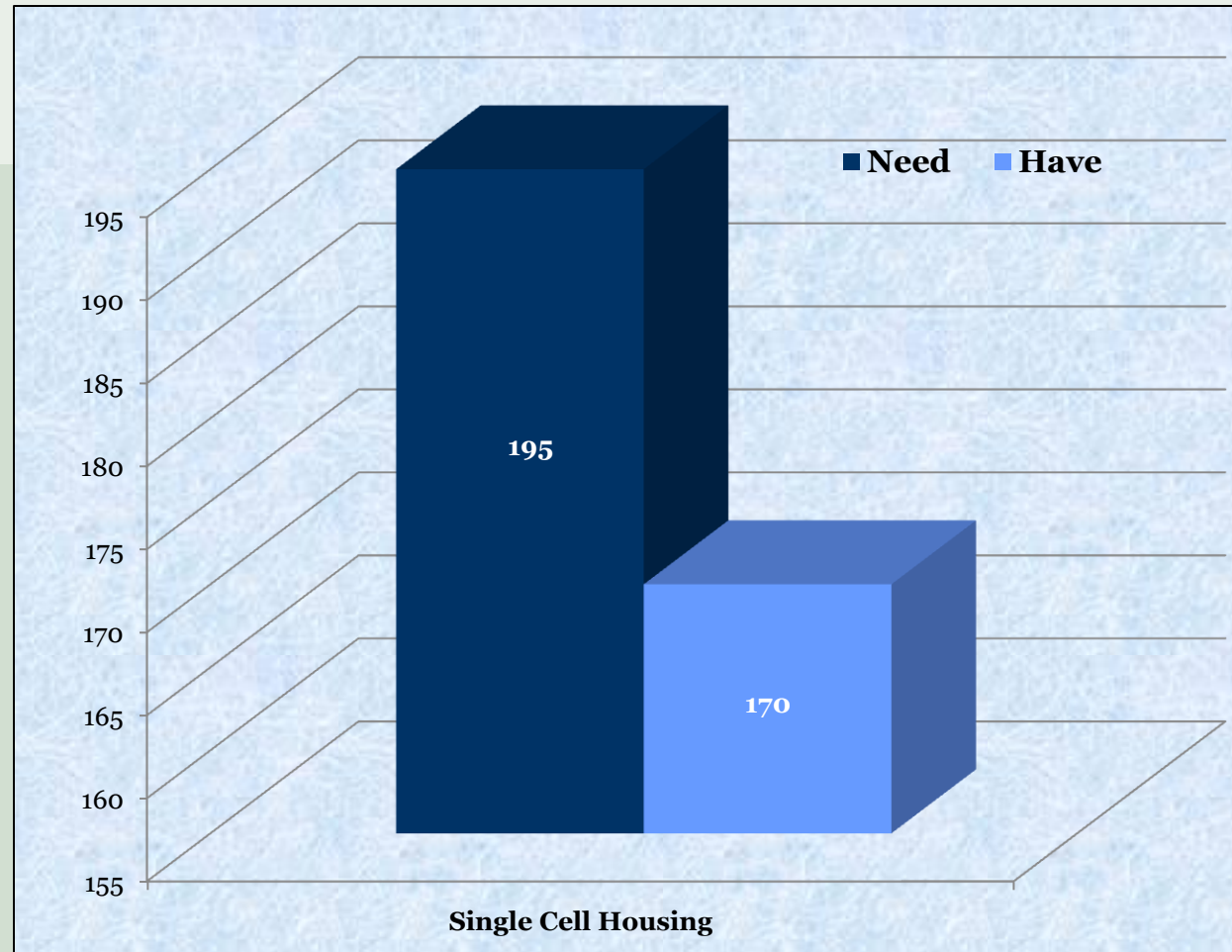
## Impacts of opening the remaining 72 East Annex beds

- Extra capacity will detain the remaining high risk inmates (70+)
- CBR's reduced by approximately 600/year
- Hold all those at risk of FTA for court
- Lengthen the sentence time served for those in custody

# Offender Management



**Single Cell  
Housing for  
Maximum &  
Medium Custody  
Inmates**



# Grants



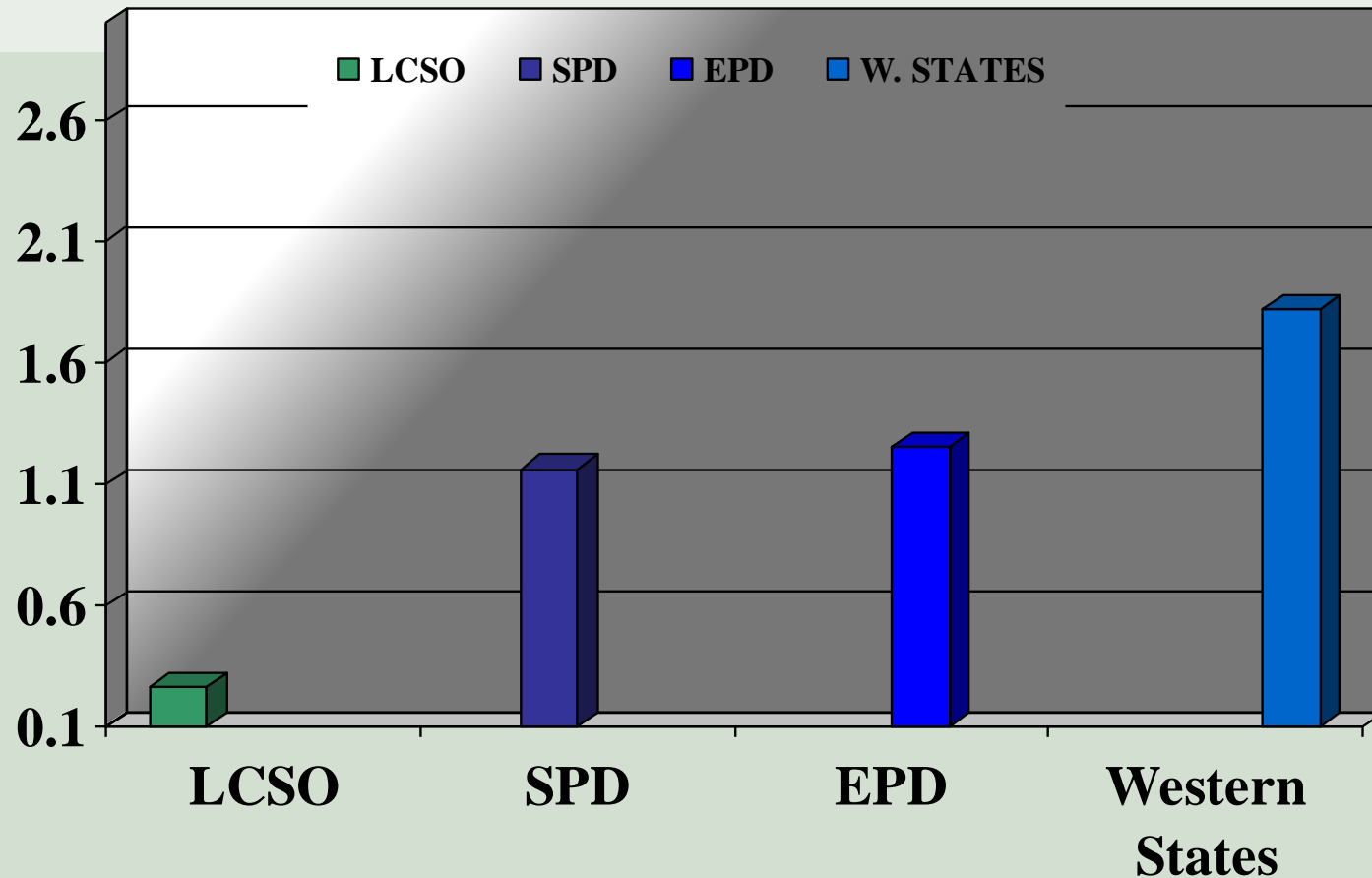
- COPS – \$763,782 – Resident Deputies
  - 3 FTE for 3 years – Lane County funds the fourth year
- COPS Tech – Video recording of book-in and radio communications for P & P
- ODOT – 75% of Traffic Team deputy
  - awarded due to high number of Lane County traffic accidents
- Marine Patrol – \$467,868
  - funds the majority of 3 deputies and .33 FTE Sergeant
- OEM (2) – Homeland Security
  - 1) \$50,621 – upgrades to Dispatch E911 equipment
  - 2) \$398,000 – Buffer Zone Protection Program

# Grants

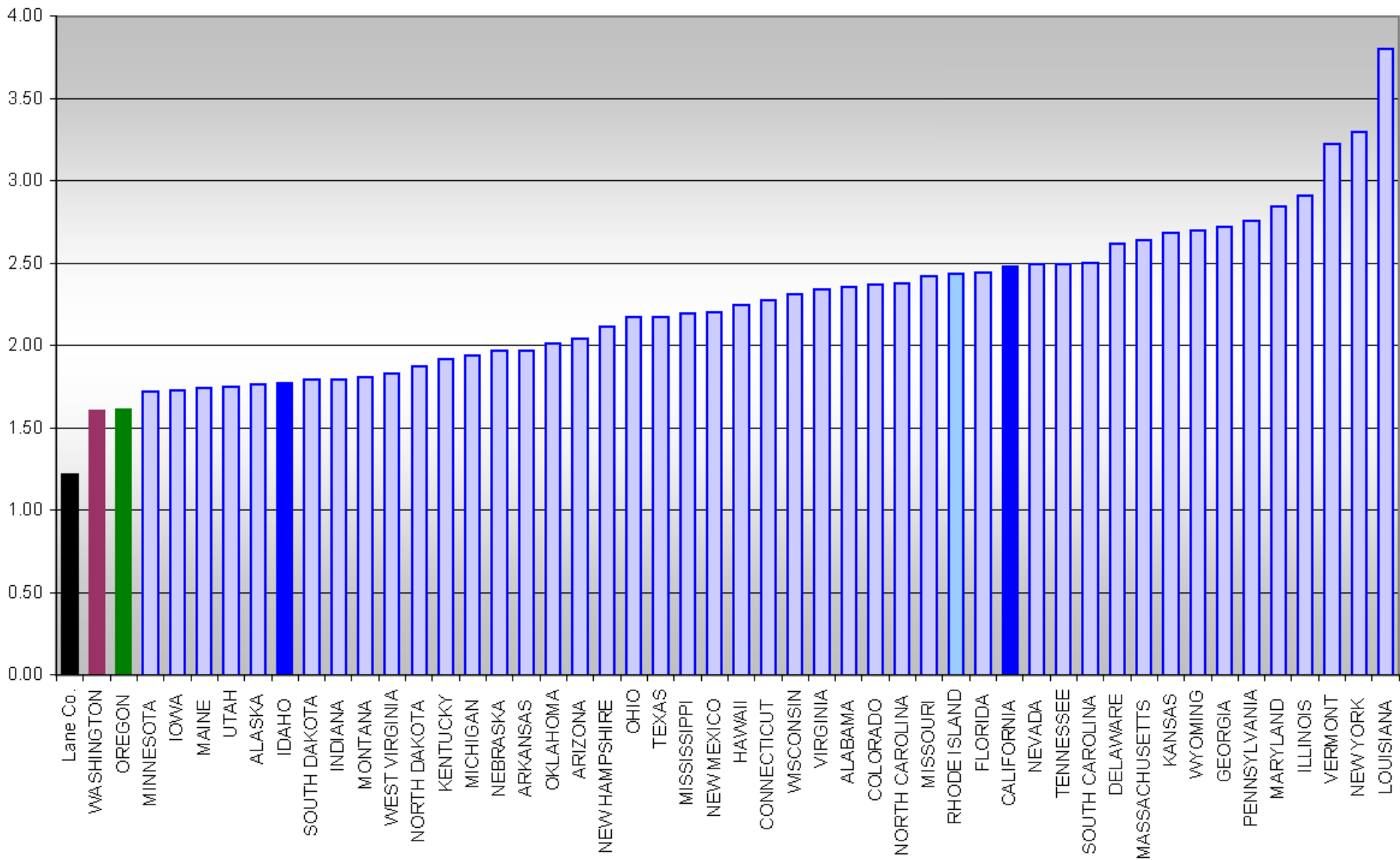


- **JAG (2)**
  - 1) 1 FTE Training Sergeant for 1 year and a portion of required training to maintain certification
  - 2) equipment needs
- **ATV Grants (2)**
  - Dunes Patrol - \$110,000 – funds a portion of the 1.0 FTE for Dunes patrol – Title III monies fund the remainder of the program
  - BLM - \$58,000 – funds .5 FTE for Deputy patrolling BLM land – BLM funds the other .5 FTE
- **Second Chance Reentry – \$406,214**
  - Community Corrections & Sponsors – With \$10,000 to LCOG
- **Congressional Earmark - \$500,000**
  - Offender Treatment & Transition

# Average Deputies Per 1,000 Residents (County – Unincorporated – 2006)



### Police & Sheriff Officers per 1,000 Capita by State - 2007



# Field Services



## Main Office Patrol

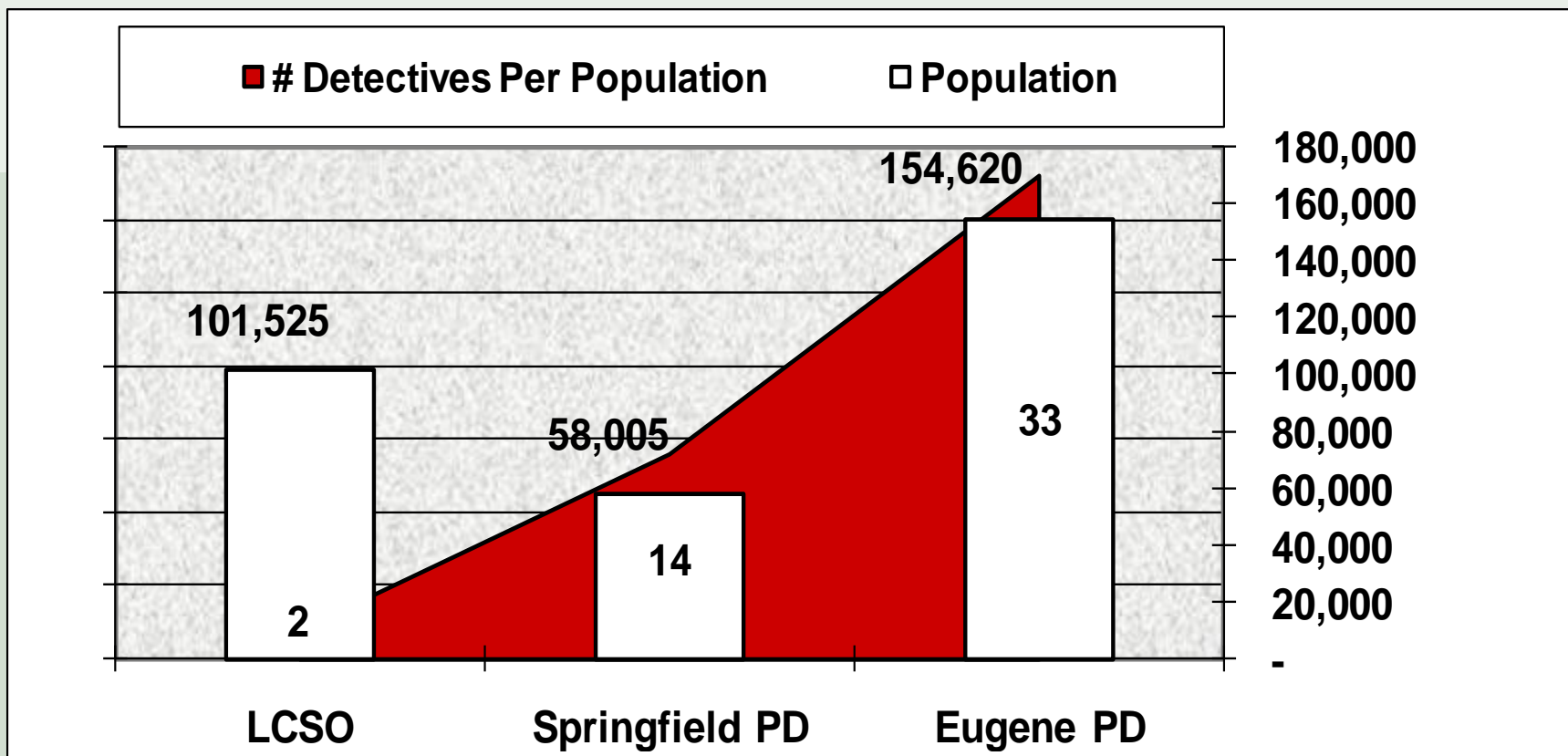
- 15 Deputy Sheriffs cover:
  - 24/7
  - 4,620 square miles
  - 339,740 county population
  - 95,420 unincorporated population
- Respond to 57,640 dispatched calls for service
- Response time averaged 13.84 minutes





# Field Services

## Detectives



- LCSO – 1 Detective for 50,762 Citizens
- Springfield – 1 Detective for 4,143 Citizens
- Eugene PD – 1 Detective for 4,685 Citizens

# Lane County / State Accidents



|                      | <u>2005</u>            | <u>2006</u>            | <u>2007</u>            | <u>2008</u>            |
|----------------------|------------------------|------------------------|------------------------|------------------------|
| <b>Fatal</b>         | <b>32</b><br>488       | <b>40</b><br>417       | <b>40</b><br>411       | <b>32</b><br>369       |
| <b>Injury</b>        | <b>1,700</b><br>29,022 | <b>1,948</b><br>29,458 | <b>1,568</b><br>18,500 | <b>1,456</b><br>18,040 |
| <b>Total Crashes</b> | <b>3,712</b><br>44,877 | <b>3,636</b><br>44,901 | <b>3,554</b><br>44,162 | <b>3,277</b><br>41,815 |

# Field Services



## Traffic Safety Team

- Secondary Mission – to assist priority calls for service detracts from primary mission of traffic safety
- 2009
  - Responded to 11,693 calls for service as a primary response
  - Responded to an additional 237 calls as back-up/assist
  - 390 DUII custodies



# Lane County Adult Corrections



## Parole & Probation

- Average number of offenders under supervision – 3,400
- Average caseload per Parole Officer in Lane County:
  - General Offenders – 99
  - Sex Offenders – 74
  - Domestic Violence Offenders – 92

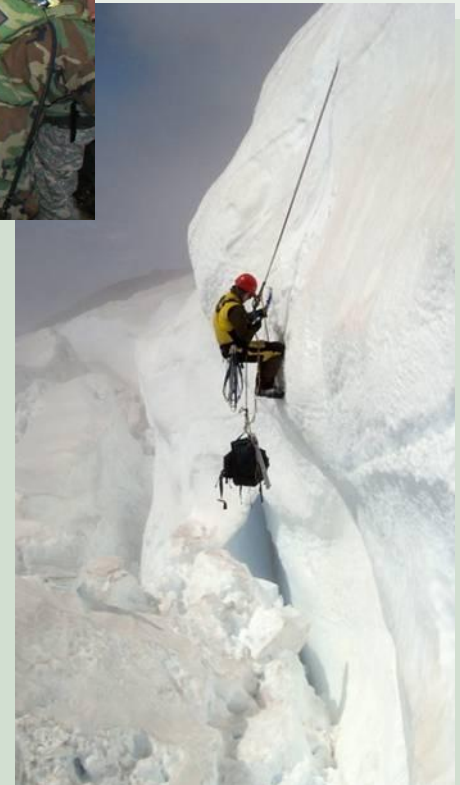


# Special Operations



## Search & Rescue

- 2009
  - 2 FTE, 1 extra help
  - 106 SAR Missions
  - 17,562 hours of service by volunteers
  - Managed seven separate volunteer groups totaling over 200 volunteers
    - ✦ Explorer Scouts
    - ✦ Eugene Mountain Rescue
    - ✦ Sheriff's Mounted Posse
    - ✦ Lane County Water SAR
    - ✦ Lane County Sheriff's Amateur Radio Operators
    - ✦ Special Vehicles Group
    - ✦ Ground Search and Rescue

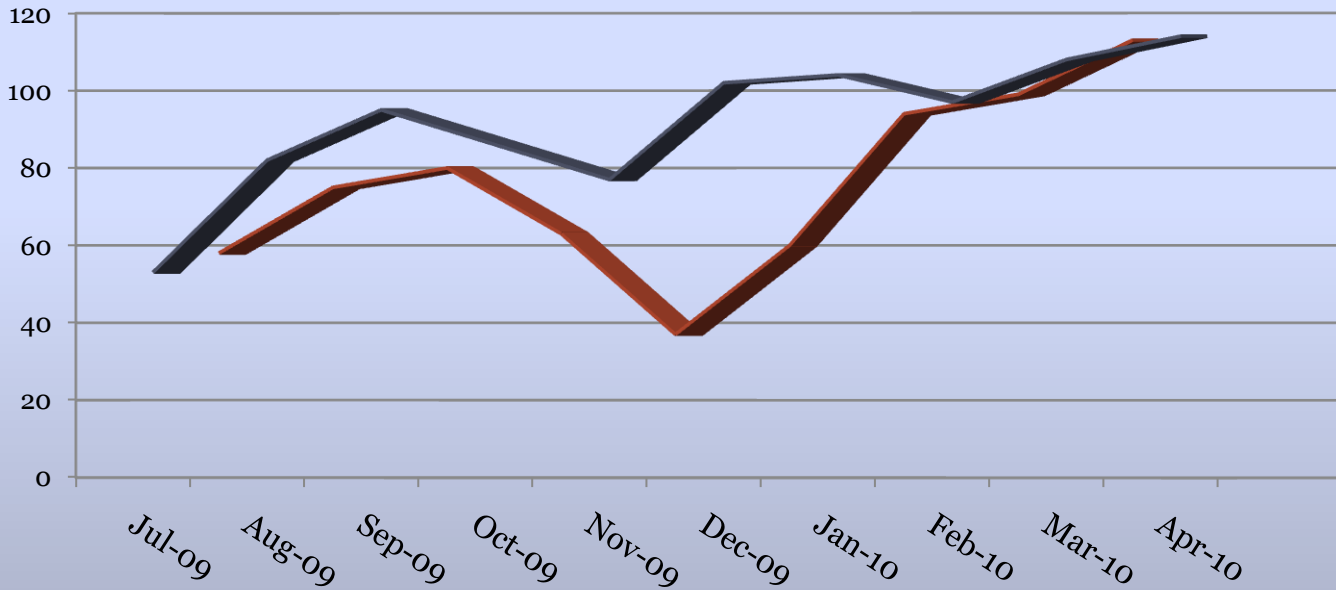


# Special Operations



## Transport

■ Shuttle to other agencies    ■ New custodies / warrant arrests

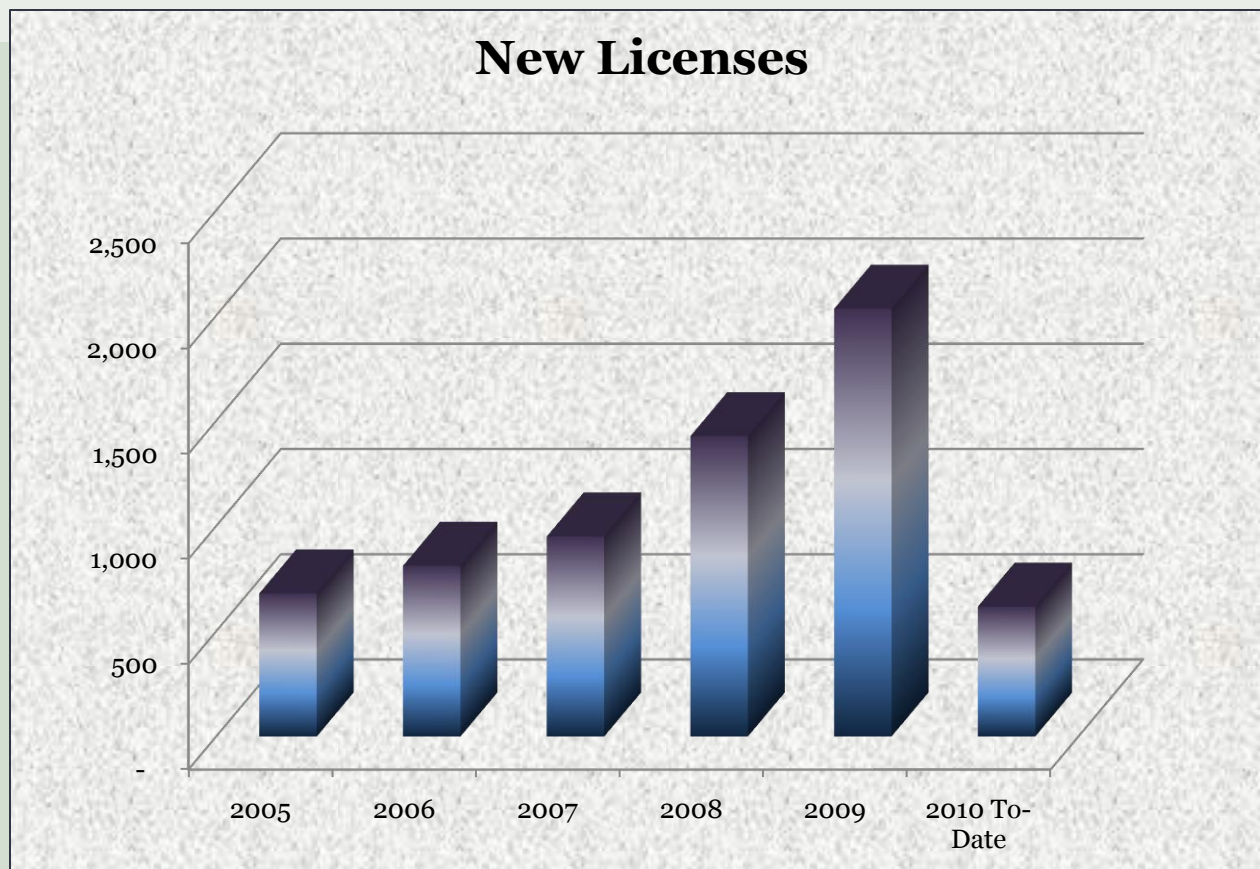


# Lane County – Armed!



## Concealed Handgun Licenses

- Over 12,300 CHL Holders in Lane County
- 2009 New CHL applications – **average of 39/week** – compared to 27/week in 2008
- 2010 application processing is keeping pace with 2009



# Lane County Sheriff's Office



Sheriff Russ Burger

541-682-4434

Email: [sheriffs.office@co.lane.or.us](mailto:sheriffs.office@co.lane.or.us)

Website: [www.lanecounty.org/Departments/Sheriff](http://www.lanecounty.org/Departments/Sheriff)